



# Windows 10 and Edge

Version 1.0

**Using Internet Explorer on Windows 10 to run in-application tests**

<b>Project</b>	Windows 10 – Internet Explorer
<b>Customer</b>	ECDL

# Contents

<b>Revision History</b> .....	Error! Bookmark not defined.
<b>Contents</b> .....	<b>2</b>
<b>Overview</b> .....	<b>3</b>
Microsoft Edge.....	3
Chrome release 45.....	3
<b>Changing Windows 10 default Web Browser</b> .....	<b>4</b>
Procedure.....	4
Internet Explorer 11 executable .....	7

## Overview

### Microsoft Edge

Microsoft Edge is the new web browser bundled with Windows 10 that replaces Internet Explorer as the default browser. While the Microsoft Edge browser is compatible with EnlightKS Courseware, it is not compatible with in-application tests and some SCORM content.

We recommend that customers use Microsoft Internet Explorer 11, or another supported browser, rather than Microsoft Edge for delivery of in-application tests and SCORM content.

The sections below explain the steps you can take to change the default web browser in Windows 10 from Microsoft Edge to an alternative, supported default web browser.

### Chrome release 45

Please also note that Google Chrome version 45 and above no longer supports Java, therefore candidates who take in-application tests using Chrome will now be required to install the EnlightKS Java-Free plugin and Extension or use Internet Explorer or Firefox which does support Java.

Resource	MS Edge	Internet Explorer (9/10/11)	Chrome Release 44.x	Chrome Release 45.x	Firefox
Courseware	✓	✓	✓	✓	✓
In-Application (Java)	✗	✓	✓	✗	✓
In-Application (EnlightKS Java Free Plugin / Extension)	✗	✓	✓	✓	✓
SCORM / Lectora / 3 <sup>rd</sup> Party content	*	✓	✓	✓	✓

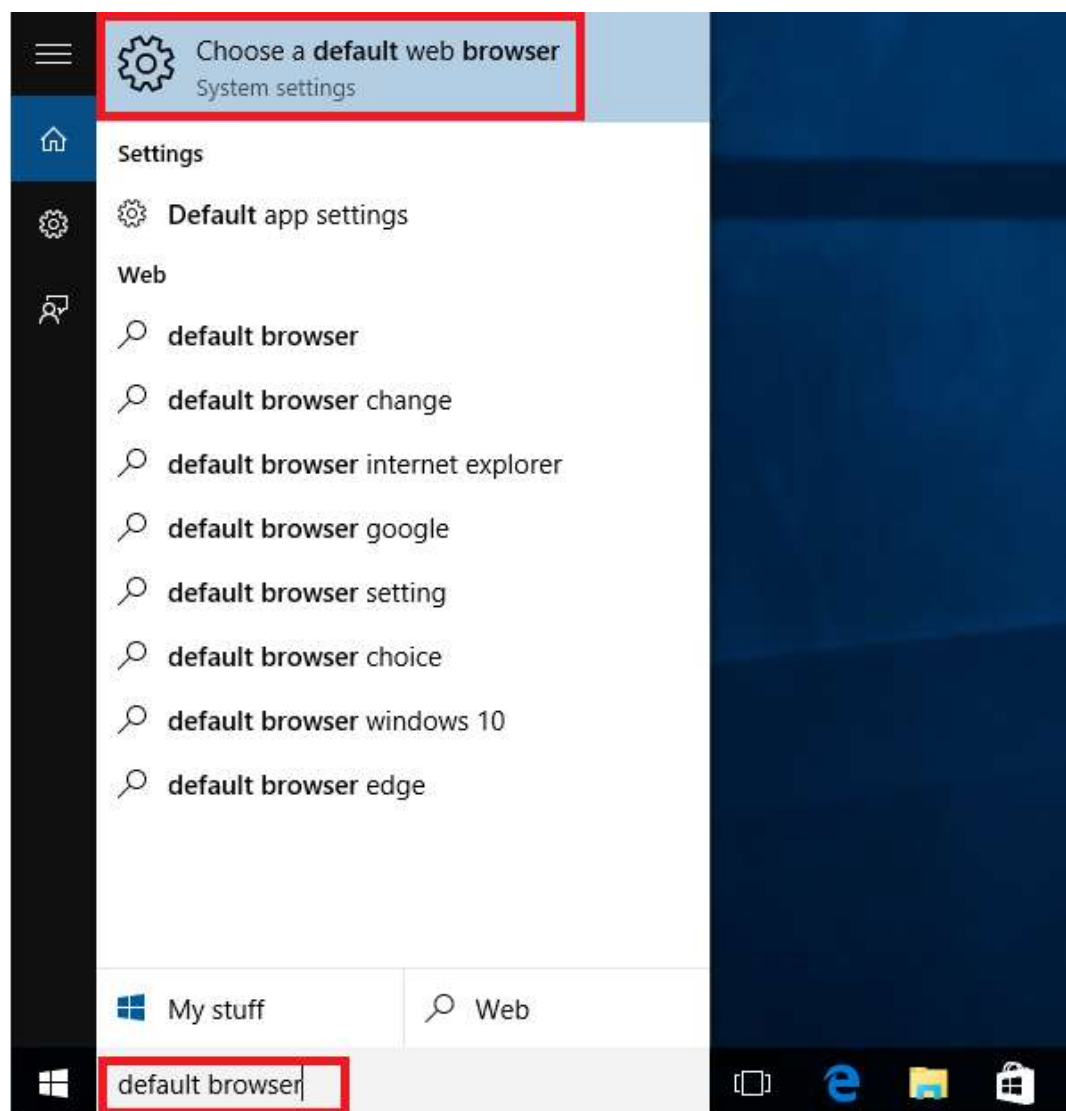
\* Some tests may not be compatible with Microsoft Edge browser.

# Changing Windows 10 default Web Browser

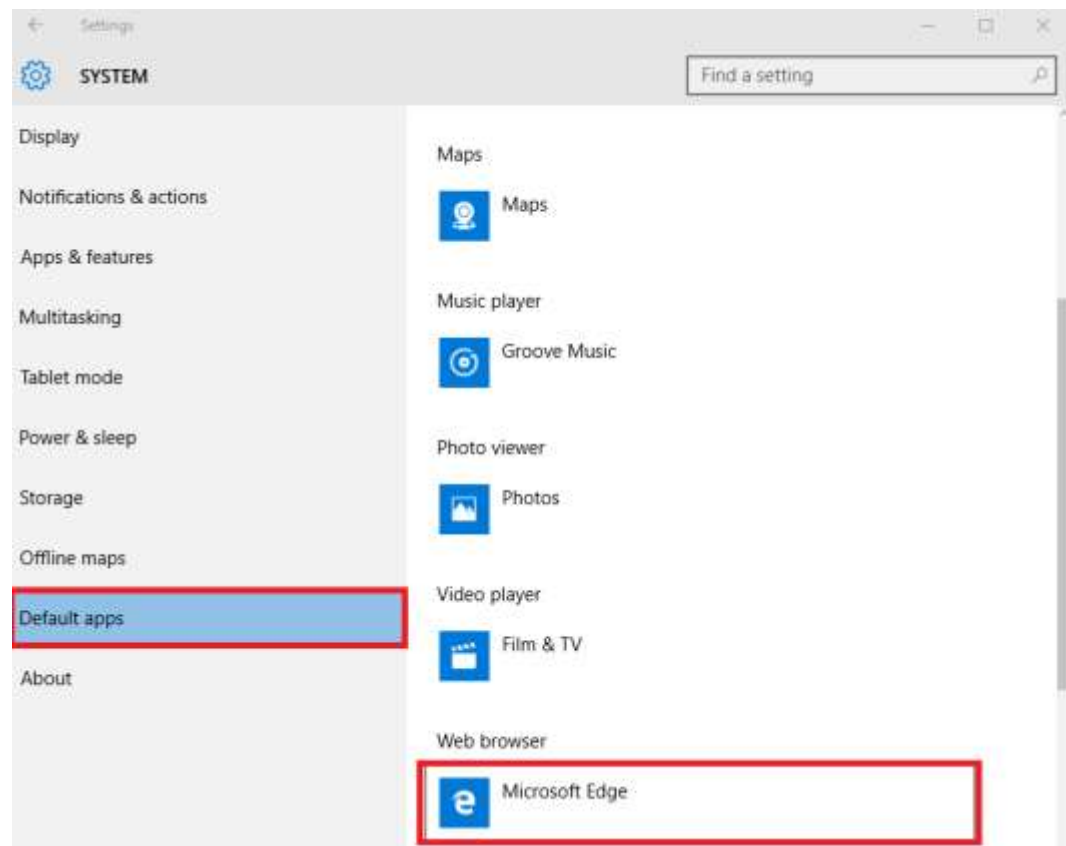
## Procedure

Microsoft Edge is the default Web Browser for Windows 10. To change the default Web Browser perform the following:

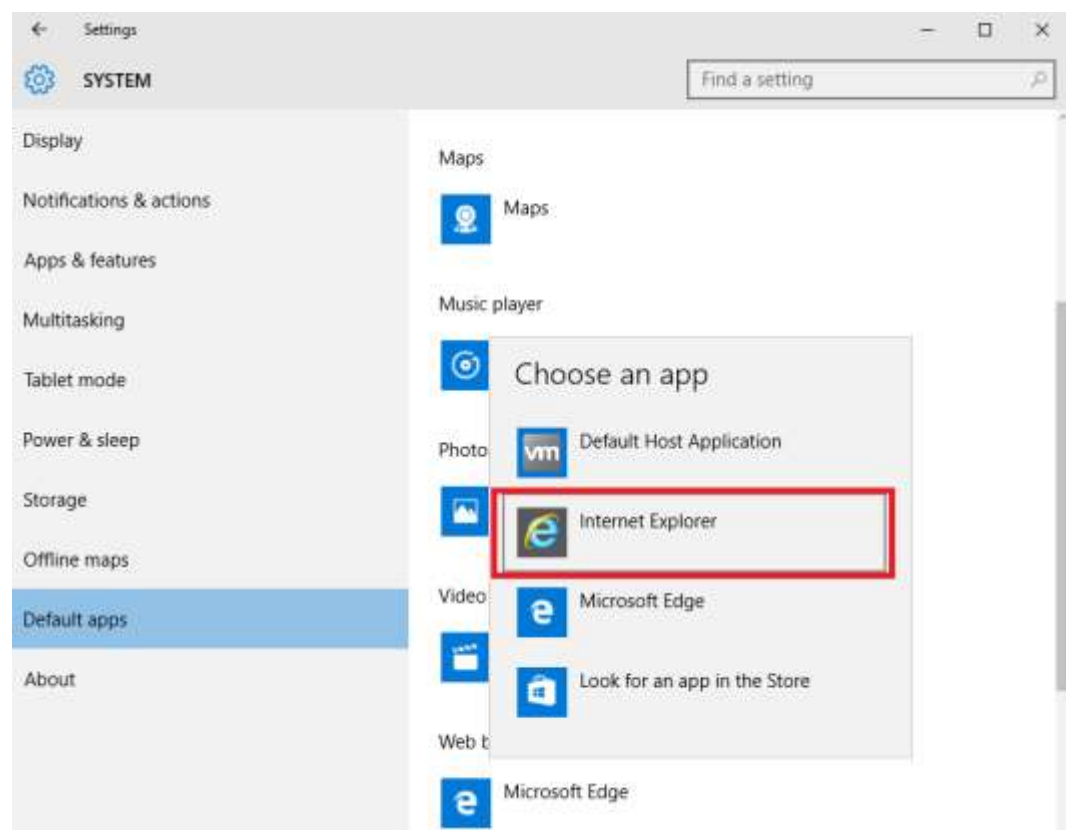
Within the search field type: **default browser** and then press Enter and then click **choose a default web browser** from the top of the search results.



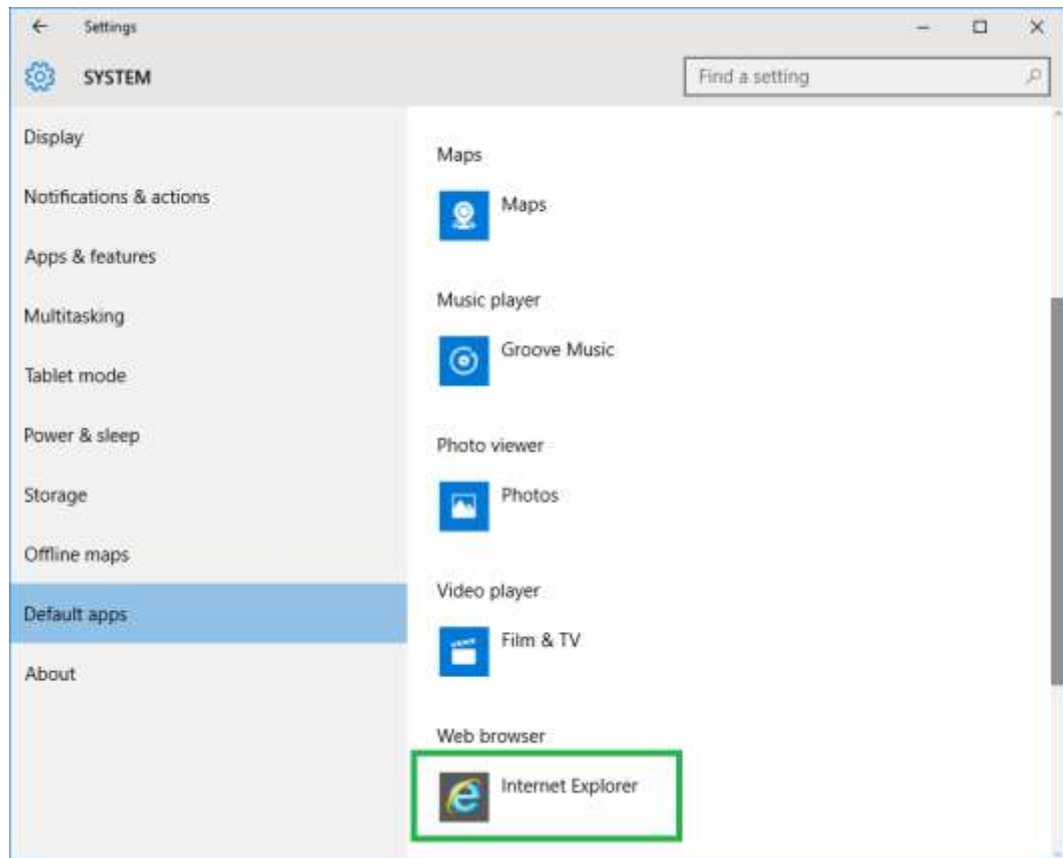
Press **Default Apps**, and then under the Web Browser section press **Microsoft Edge**.



Press **Internet Explorer**.



Internet Explorer is now the default Web Browser within Windows 10.



*NB: This procedure can also be used to change the default Web Browser to an alternative browser such as Firefox or Chrome.*

## Internet Explorer 11 executable

Internet Explorer 11 comes pre-installed with Windows 10.

The Internet Explorer 11 executable can be found in the following directory:

**C:\Program Files\Internet Explorer\iexplore.exe**

